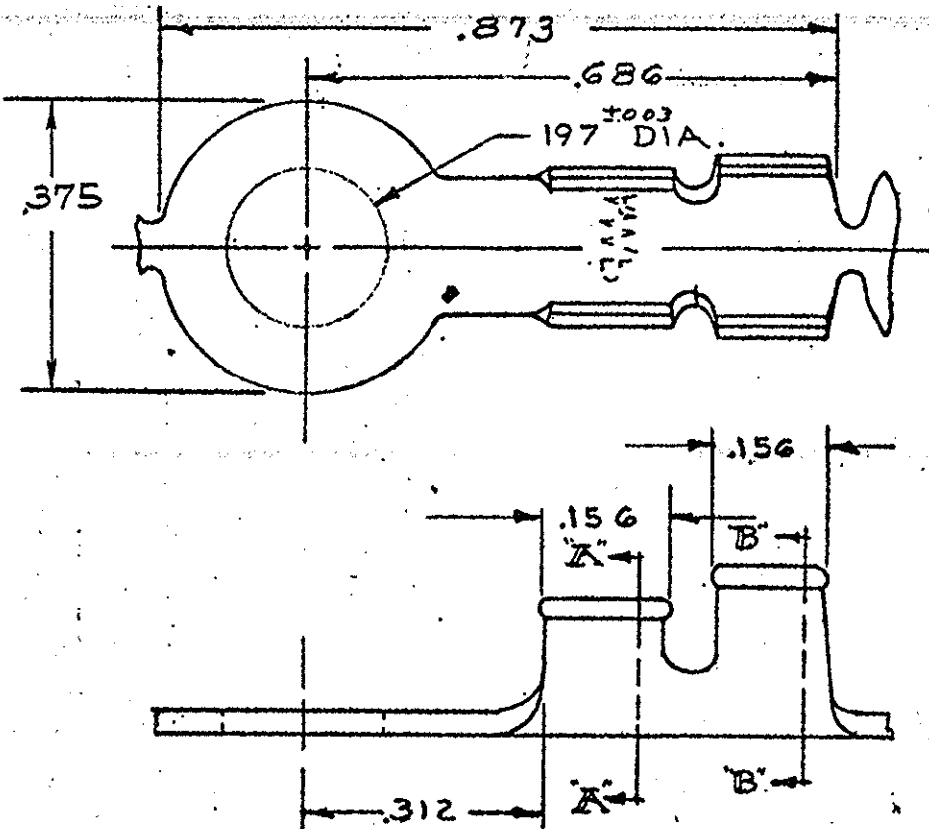


NUMBER 640007



SECT. A-A

SECT. B-B

1 CONTINUOUS STRIP, ON REELS

PART NO.	FINISH
640007-1	BRIGHT TIN
640007-3	TIN

UNPUBLISHED COPY NOT TO BE REPRODUCED NOR PUBLISHED WITHOUT WRITTEN PERMISSION OF AMP INCORPORATED.

CUSTOMER COPY REFERENCE ONLY

©1973 BY AMP INCORPORATED. ALL RIGHTS RESERVED. AMP PRODUCTS COVERED BY PATENTS AND/OR PATENTS PENDING.

REV	PER	DATE	BY	CHK	DATE
C1	REV PER ECR-06-000453	9-27-06	MF	DD	9-27-06
C	REV PER 063A-0348-03	9-27-03	MF	DD	9-27-03
B	REV PER	5 MAY 03	MSF	DD	5 MAY 03
A	REV PER AI-6785	7/9/0	—	—	7/9/0

MATERIAL AND FINISH  
 .030 BRASS  
 FINISH: SEE TABLE

WIRE — RANGE — INSULATION  
 #16-14 120-180

TOLERANCE EXCEPT AS NOTED  
 ±.015 ±1° 0'

SCALE —//—

NAME  
 RING

AMP INCORPORATED HARRISBURG, PENNA.

CLASS —//—

TYPE —//—

LOC A NO 640007 REV CI

DIMENSIONS IN INCHES. DO NOT SCALE PRINT.

PRINT DIST 50